



Main Features:-

- ◆ EN GJS 400-15 Epoxy Coated Ductile Iron
- ◆ Chrome Plated Brass Ball
- ◆ Reinforced PTFE (RPTFE) Ball Seats
- ◆ NBR O-Ring
- ◆ PN16 Pressure + -10C to+100C (70 for gas)

*Temperature and pressure determined by valve body, seat etc.



Suitable Applications & Approvals:

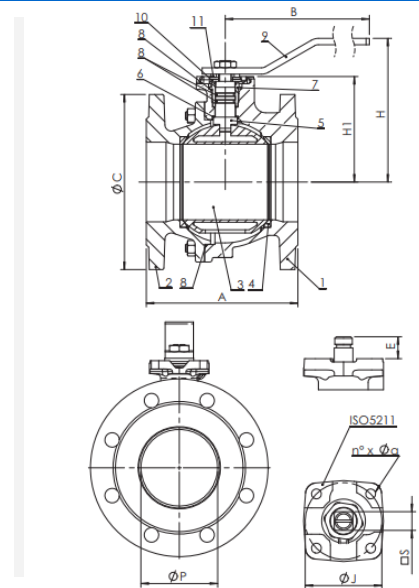


SERIES: 10069

MANUFACTURER: **AVOL**
INDUSTRIAL VALVES

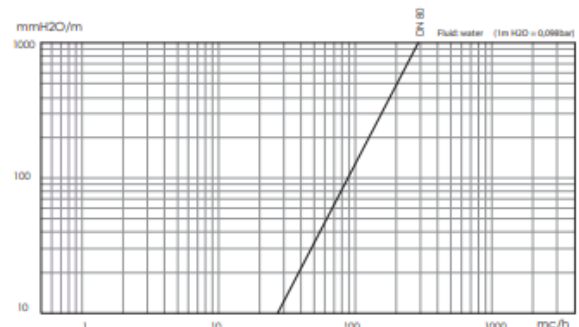
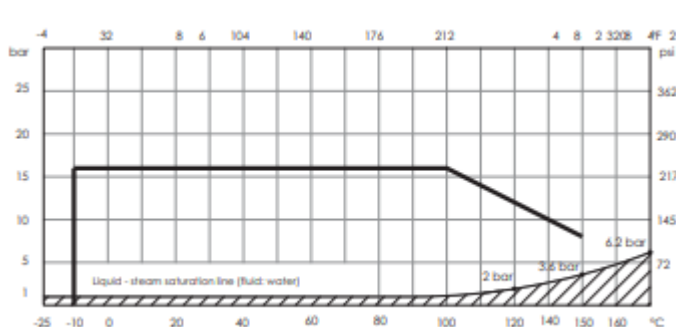
SIZE	CODE	P	A	H	HI	B	C	ISO	J	E	S	Nm	Kv	Kg
3"	10069-11	76	180	165	118	280	200	F07	70	20	17	70	947	15.5

#	ITEM	MATERIAL
1	BODY	EN GJS 400-15 Epoxy Coated Ductile Iron
2	FLANGE	EN GJS 400-15 Epoxy Coated Ductile Iron
3	BALL	CuZn40Pb2 Chrome Plated Brass
4	BALL SEAT	Reinforced PTFE
5	STEM	CuZn40Pb2 Brass
6	SLIDING WASHER	PTFE
7	RING	CuZn40Pb2 Brass
8	O-RING	Viton
9	LEVER	Epoxy Coated Carbon Steel
10	STOP PLATE	Galvanised Carbon Steel
11	SPRING WASHER	Galvanised Carbon Steel



VALVE DIMENSIONS

PRESSURE & TEMPERATURE CHART & HEADLOSS CHART



For other DN200 dimensions, please call.

T +44 (0)1386 552369

W www.allvalves.co.uk

E sales@allvalves.co.uk

F +44 (0)1386 554227